



Edina Resource Center Newsletter

October 2020

Greetings!

October is traditionally packed with fall festivals and event for us to share, but it's 2020 and nothing has felt very traditional. So, while we don't have a bunch of events happening this month, there are lots of resources below to help in the areas of Health & Wellness, Food Supports, Financial Assistance, Families & Children, Senior Supports and the upcoming election.

If you or someone you know is looking for additional resources, please let me know.

Stay safe,

Krista Phillips
Edina Resource Center Manager
952.848.3936
contact@edinaresourcecenter.com
www.edinaresourcecenter.com



Health & Wellness

COVID-19 TESTING

Community Testing events for COVID-19 are happening across Minnesota at various location to test anyone with or without insurance. Click on a link for an appointment. If you are not able to sign up online, or need an interpreter, call 1-855-612-0677 for assistance

[New Salem Baptist Church, Minneapolis](#), October 8-9, 2pm-6pm

[St Peter AME](#) St Paul, October 22-23 2pm-6pm

[United Church of God in Christ](#), St Paul, October 29-30, 2pm-6pm

Resources

- [COVID-19 TESTING LOCATIONS IN MN](#)
- [HOME SCREENING TOOL for COVID-19 SYMPTOMS](#) (Schools/Child Care settings)
- [DECISION TREE for COVID-19 SYMPTOMS](#) (Schools/Child Care settings)
- [SHOULD I GET TESTED FOR COVID-19?](#)

STAY SAFE MN
Get Tested for COVID-19



CHILDREN'S MENTAL HEALTH

Parent Resources Supporting Children's Mental Health

Hennepin County Children's Mental Health Collaborative has pulled together a variety of [Parent Resources Supporting Children's Mental Health](#) during the Covid-19 pandemic.



Twin Cities Jewish Community 20th Annual Conference on Mental Health (Virtual)

Sunday, October 18, 2020

9:30am - 3:00pm

Inviting Positivity in Uncertain Times, is free and open to people of all faiths and spiritualities. The keynote address, featuring Bryan Piatt, will explore the experience of living with OCD and anxiety and creating a work/life balance. The conference will offer a variety of breakout sessions workshops with relevant topics to choose from covering a broad-range of mental health issues.

[Conference Brochure](#)

[Register Here](#)



MNSURE OPEN ENROLLMENT

Open enrollment for 2021 runs November 1- December 22, 2020.

Current and new applicants need to apply during open enrollment for health care coverage in 2021. Connect with a MNSure [Navigator](#) to help you with the application process.

mnsure.org/



MEDICARE OPEN ENROLLMENT

Open enrollment for 2021 runs October 15- December 7

Enroll, drop or switch your Medicare coverage during open enrollment

For assistance contact the **Senior Linkage Line 1-800-333-2433**

medicare.gov/



2020 Election

EDINA CANDIDATE FORUMS

League of Women Voters Edina has hosted candidate forums for Mayor, City Council, State House District 49A, State House District 49B, State Senate District 49, and Hennepin County Commissioner. To view the recorded candidate forums, go to: <https://lwvedina.org/>



TUESDAY, NOVEMBER 3 - GENERAL ELECTION

All eligible voters in Edina can vote early by absentee either in person or by mail. Learn more about voting by mail, dropping ballots off at City Hall, Voting Absentee In-person and voting on Election Day at edinamn.gov/223/Election



Remember: If you vote absentee and have not registered to vote, you will need to have a witness sign your absentee ballot.

Voter Resources:

- [Register to Vote](#)
- [Check if you are registered to vote at your current address](#)
- [Request an Absentee Ballot](#)
- [Track My Ballot](#)
- [Poll Finder](#)
- [What's on My Ballot](#)

Food Resources

VEAP FOOD PANTRY

Visitors are welcome to receive food from our drive-through twice a month. This will include a food pack with items of your preference alongside a produce pack with fruits, vegetables and other perishable items. veap.org

Open Monday-Friday. Call 952-888-9616 for an appointment.



VEAP MOBILE PANTRY

Open to Everyone! The 2nd Thursday of each month, VEAP loads up the Mobile Pantry with Fresh produce and health food options. No appointment needed. For all locations visit veap.org/events/
Yorktown Continental Apartments, Thursday, October 8, 2:00pm-3:30pm

LOAVES & FISHES

Free community meals to anyone in need. For the time being, all dining sites serve takeaway meals ONLY.

Bloomington-- Creekside Community Center, Monday-Friday, 5:30pm-6:30pm

Hopkins- St Gabriel's Catholic Church, Saturday-Tuesday, 5:30pm-6:30pm

Richfield- Hope Presbyterian Church, Monday-Friday, 5:00pm-6:00pm

Richfield-Woodlake Lutheran Church, Saturday & Sunday, 5:30pm-6:30pm



Volunteers are needed at many of the site on any given day loavesandfishesmn.org/volunteer/

MEAL BENEFITS- Free & Reduce Lunch Program

Applications for free and reduced lunch benefits are now open. Free breakfast and lunches will be provided without an application until Dec 20, 2020. To continue to receive meals in 2021, an approved application is needed.

[Click here](#) to learn more about eligibility and the process.

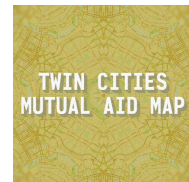
Links to Meal Benefit Application: [English](#) [Somali](#) [Spanish](#)

To learn more about Free meals and how to pick-up your meal on Hybrid days, visit edinaschools.org/domain/106



TWIN CITIES MUTUAL AID MAP

The Twin Cities Mutual Aid Map is updated daily with locations in the Twin cities offering food, hygiene items, cleaning supplies and more. Find out where to access resources and which locations are accepting donations. Search by type of item, zip code and more. Website is accessible in multiple languages. twin-cities-mutual-aid.org/



In and Around Edina

BUCKTHORN DUMP

Edina residents can dump their buckthorn shrubs for free during the semi-annual buckthorn dump over two weekends in mid-October. Residents must show a Photo ID with a current Edina address.

Braemar Golf Dome at 7420 Braemar Blvd.

Saturday, Oct. 17 and 24, 8am-4pm and Sunday, Oct. 18 and 25, Noon-4pm



CENSUS 2020 -It's not too late to be counted!

Census takers are now out visiting households that haven't yet responded to the 2020 Census. To avoid the knock, complete your census online at 2020Census.gov or call 1-844-330-2020 to be counted. All Census takers will wear their official 2020 Census ID Badges and use a 2020 Census Phone/lpad to complete your census.



Children, Youth & Families

CHILD CARE, PRESCHOOL & SCHOOL-AGED CARE PROVIDERS

Edina is home to a number of childcare, preschool and school-age providers. The fall listing of care providers in Edina is now available on the [ERC website](#).



Child Care Financial Assistance

If you need help paying for child care, apply for [Child Care Assistance](#). 4-person households with an

income at or below \$51,095 may be eligible. Hennepin County residents need start by calling 612-348-5937 to begin the process.

HOMWORK RESOURCES 101

Learn to access and use online resources to get ahead with your homework. We will be highlighting HelpNow, which is available free with your library card and includes:

- tutoring every day between 1-11 p.m. in English and Spanish
- a writing lab that provides feedback on your essays
- learning resources to build your skills in reading, science, and math

Register online at hclib.org/events
TUESDAYS/THURSDAY 4:00PM AND 6:30PM



WELCOME WEDNESDAYS

Wednesdays, 1-4pm (weather permitting)
Southdale Library, 7001 York Ave S, Edina

Stop by our welcome tent outside Southdale Library to talk to library staff and ask questions about library services. Creative kits for kids and adults available for free. You can learn to knit or crochet. Kids and caregivers can explore literacy concepts with art materials.



SPORTS-ACTIVITIES-CLASSES

Registration for Fall sports and activities is now open. Click on the [2020 Fall/Winter Youth Activities & Sports Listing](#) for registration deadlines, websites and scholarships available.

Edina Community Ed: [Fall Opportunities](#)
Edina Park and Rec Programs: [Fall & Winter](#)
Edina High School: [Register today!](#)



[Edina Give and Go](#) can help families with financial barriers to access activities.

Financial Resources

EMERGENCY HOUSING ASSISTANCE

Renters in Hennepin County who have been financially harmed by COVID-19 may qualify for Hennepin County's emergency assistance program to help with rent and other housing costs. [Learn more about eligibility and apply online](#)

MN COVID-19 Housing Assistance

If your housing-related payment with a due date of March 1, 2020 or later that is past due, you may be eligible for MN COVID-19 Housing Assistance. Apply or Reapply [online](#), call 211 or text MNHOME or MNRENT to 898-211. housinghelpmn.org/

ENERGY ASSISTANCE

[2020-21 Energy Assistance Applications](#) are now available. This program is for renters and homeowners needing assistance paying energy bills. The program runs until May 2021. CAP-HC is the provider for Hennepin county residents. Applications are available online or you call to have an application mailed to you 952-930-3541. [Learn more](#)



Community Action
Partnership of Hennepin County

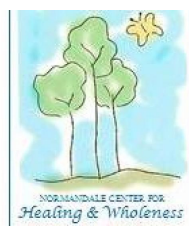
Senior Resources

RESPONDING TO DEMENTIA RELATED BEHAVIOR

Hosted by: Normandale Center for Healing and Wholeness
Saturday, October 10, 2020 9:00am-4:30pm

Behavior is a powerful form of communication and is one of the primary ways for people with dementia to communicate their needs and feelings as the ability to use language is lost. However, some behaviors can present real challenges for caregivers to manage. Join us to learn to decode behavioral messages,

identify common behavior triggers, and learn strategies to help intervene with some of the most common behavioral challenges of Alzheimer's disease.
Register here: <https://bit.ly/34Yqkna>



SUPPORT GROUPS with Normandale Center for Healing and Wholeness

Alzheimer's Caregiver Support Group

Sat. Oct 10, 10:30am-12pm
Wed. Oct 21, 6:00pm-7:30pm
Sat. Nov 14, 10:30am-12pm
Wed. Nov 18, 6:00pm-7:30pm



normandalecenter.org/calendar

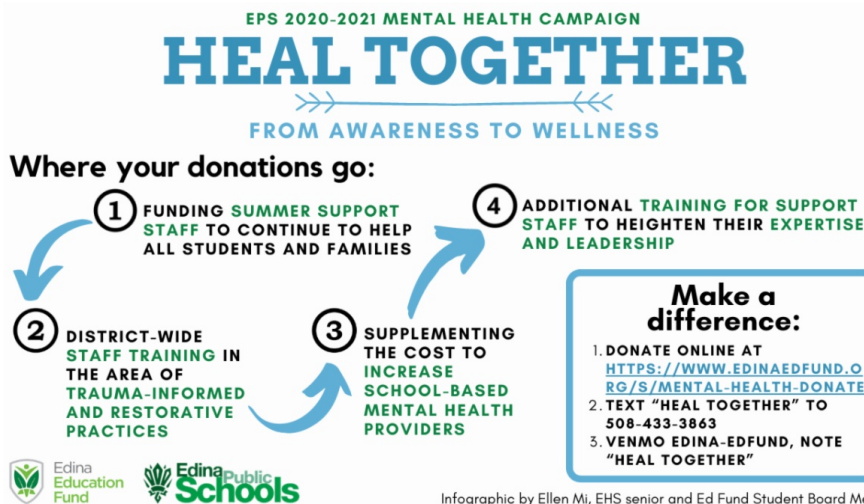
Caregiver Support Group

Sat. Oct 10, 9:00am-10:30am
Tues. Oct 27, 12:30-2pm
Tues. Nov 10, 12:30pm-2pm
Sat. Nov 14, 9:00am-10:30am
Tues. Nov 24, 12:30pm-2pm

Calendar

- OCT 12 INDIGENOUS PEOPLES DAY
- OCT 31 HALLOWEEN / DAY LIGHTS SAVINGS ENDS
- NOV 3 ELECTION DAY
- NOV 11 VETERAN'S DAY

Ways to Give



Common Resources Serving Edina

[Bloomington Public Health](#) (serves Edina Residents)
[Community Action Partnership of Hennepin County](#)
[City of Edina](#)
[Conflict Resolution Center](#) (mediation)
[Edina Community Education](#)
[Edina Public Schools](#)
[Hennepin County Services](#)
[Senior Community Services](#)(aging support/resources)
[Transit Link](#)
[United Way - Twin Cities 2-1-1](#)
[VEAP](#) (food)



For a full list of common resources click [here](#).



The Edina Resource Center is your connection to community resources, services and information. Our services are free and confidential. We serve anyone who lives, works or goes to school in Edina. To learn more about the Edina Resource Center visit our [website](#) or call 952-848-3936. We are open Monday-Friday 8am-4:30pm to help connect you to the resources you need.

Edina Resource Center
5701 Normandale Road
Edina, MN 55424
952.848.3936

[VISIT OUR WEBSITE](#)